

# Modix

## Large Scale 3D Printers

# TECHNICAL DATASHEET

## FILAMENT-DRYER

Version: V1

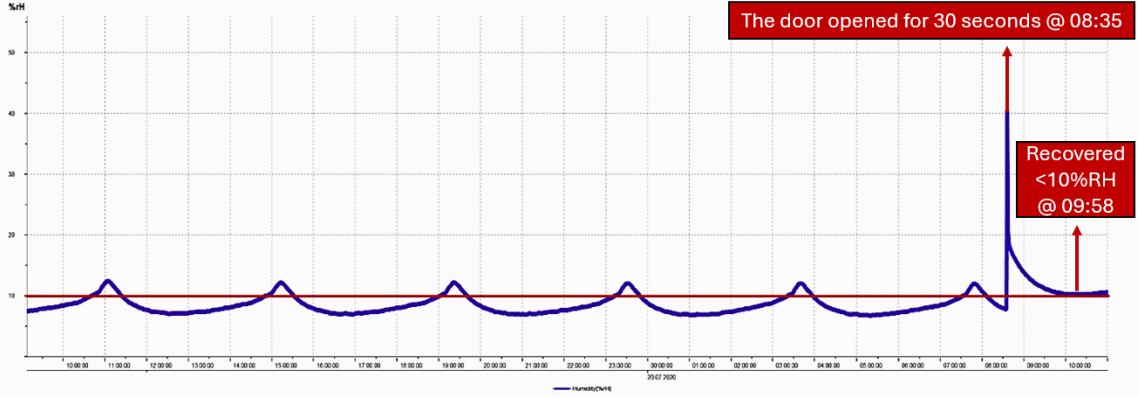
Revision date: 05/03/2024



<b>General</b>	<b>Units</b>	<b>Value</b>
Product Name		FILAMENT-DRYER
Certification		CE
<b>Product Dimensions</b>		
External Dimensions (WxHxD)	<b>cm</b>	40x87x47
Internal Dimensions (WxHxD)	<b>cm</b>	32x82x39
Weight	<b>kg</b>	16.5
Capacity	<b>liter</b>	125
<b>Power Specifications</b>		
Power Consumption	<b>W</b>	12
Voltage	<b>V</b>	110-120 or 220-240
Power Cord		1 x IEC14
Power Cord Length	<b>cm</b>	100
Power Outlets		EU, US, UK, AU
<b>Material Specifications</b>		
Door		PVC frame with glass door
Cabinet		Steel; Anti-rust coating
<b>Dryer Specifications</b>		
RH range		≤10%RH±5%RH
First Response Time (FRT)	<b>Hours</b>	< 2
Hygrometer		Digital
Hygrometer Accuracy RH		±3%RH (0~80%RH)
Hygrometer Accuracy °C	<b>°C</b>	±0.3 (20~40)
Dryer		Automatic Drying Unit
<b>Filament Capacity</b>		
Filament Shelf		2
Filament feed ports		4 – back; 2 – top
Filament Configuration		2 x 5KG spool or 1 x 8KG spool

# Performance Data Log

Instrument name: Testo 175-H2 38225927		12/22/2020 12:05:01 PM			Page	1/1
Start time: 7/17/2020 4:44:52 PM		Minimum	Maximum	Mean value	Limit values	
End time: 7/20/2020 11:07:52 AM		Humidity [%rH]	6.7	53.7	10.087	0.0/100.0



Packing List				
ITEM NO.	PART NUMBER	DESCRIPTION	QTY.	PICTURE
1	DRYER-SM-HOLDER-01	DRYER INTERNAL HOLDER	2	
2	DRYER-SM-STOPPER-01	DRYER FILAMENT STOPPER	4	
3	M5 x 12 Thumb Screw	Knurling head with raise	4	
4	M5 Knurled Thumb Nut	Knurling head with raise	4	
5	MAGNET	OD:20, THK:4.5mm, ID:3mm;	4	
6	M3X8 Conic	Black	4	
7	M3 Washer	OD:7mm THK:0.5mm	4	
8	PG7	Filament PTFE port	4	
10	EU Adapter	Modular AC adapter for Europe	1	
11	US Adapter	Modular AC adapter for the US	1	
12	AU Adapter	Modular AC adapter for Australia	1	
13	UK Adapter	Modular AC adapter for England	1	
14	FILAMENT-DRYER unit	Filament dryer unit	1	

